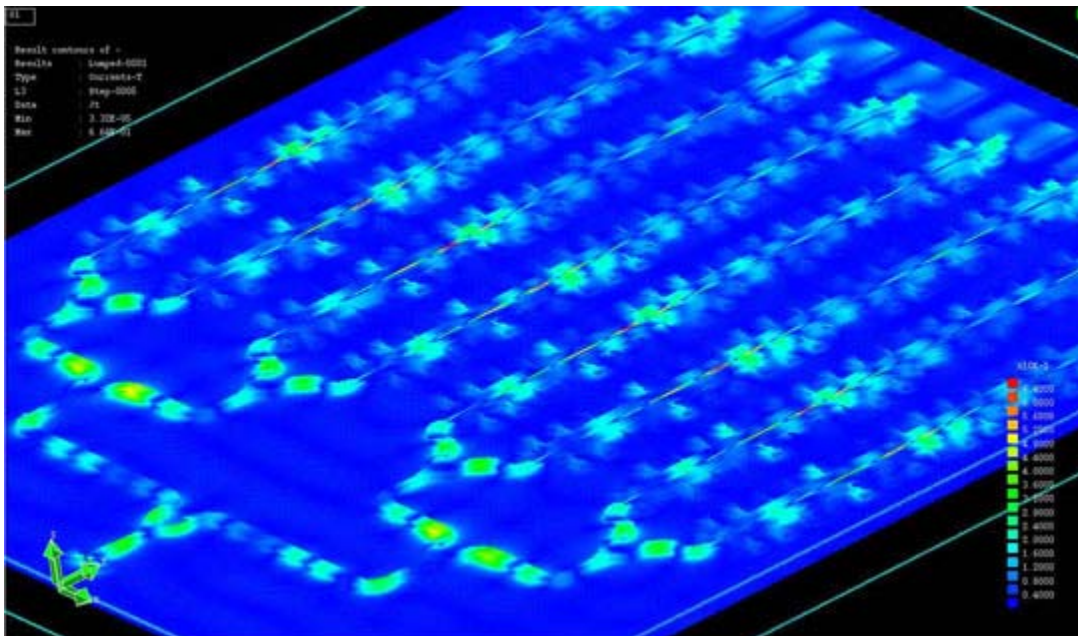


Simulation of large structures of on-chip embedded passives

efield® is particularly suitable for very large structures of on-chip embedded passives. efield® is a simulation tool including both frequency domain and time-domain parallelized solvers for distributed and shared memory multi-processor architectures. efield® includes advanced user interface options allowing the user to import CAD-models from all common CAD systems.

efield® includes advanced tools for microwave and RF components engineering such as

- Port excitations for homogeneous and inhomogeneous waveguides
- S-parameter calculation
- Near-field visualisation of currents and field



RF MEMS phased array 35-37 GHz simulated with efield® FDTD